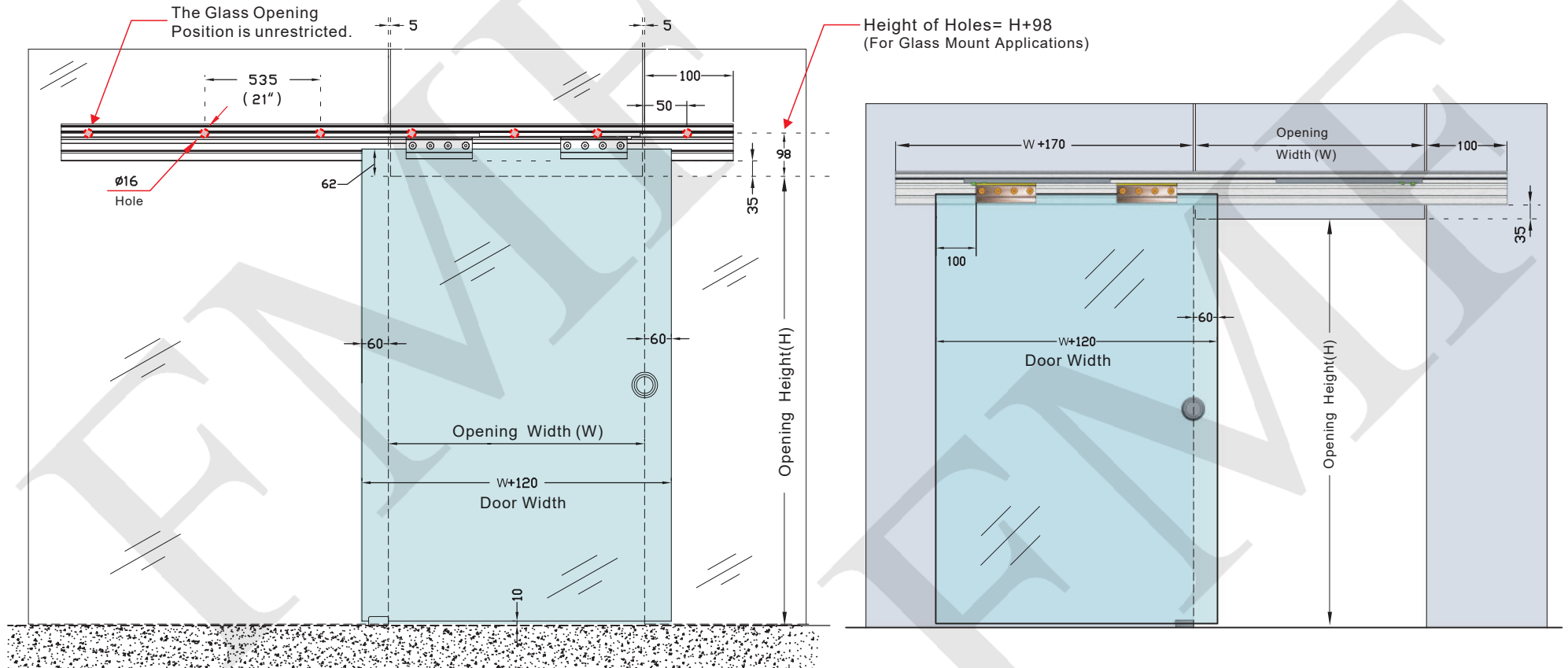


Note: For Glass Mount Applications, 6pcs of Glass Connector (HSK-01) Required per each 120" Rail



Hole-to-Hole distance = 535mm (21 inches)

The length of the guide rail= $2W + 270$

The height of the moving glass= $H - 10 + 62$
 $= H + 52$

NOTES:

- PROPRIETARY AND CONFIDENTIAL
 - THE INFORMATION CONTAINED IN THIS DRAWING IS THE SOLE PROPERTY OF FMF GLASS HARDWARE. ANY REPRODUCTION IN PART OR AS A WHOLE WITHOUT THE WRITTEN PERMISSION OF FMF GLASS HARDWARE IS PROHIBITED.

PRODUCT NAME:

HSK Series Sliding Door System

PRODUCT MODEL NUMBER:

HSK-02W

DWG NO. HSK-02W_1

UNIT: MM

DWG SIZE/SCALE A4/NTS

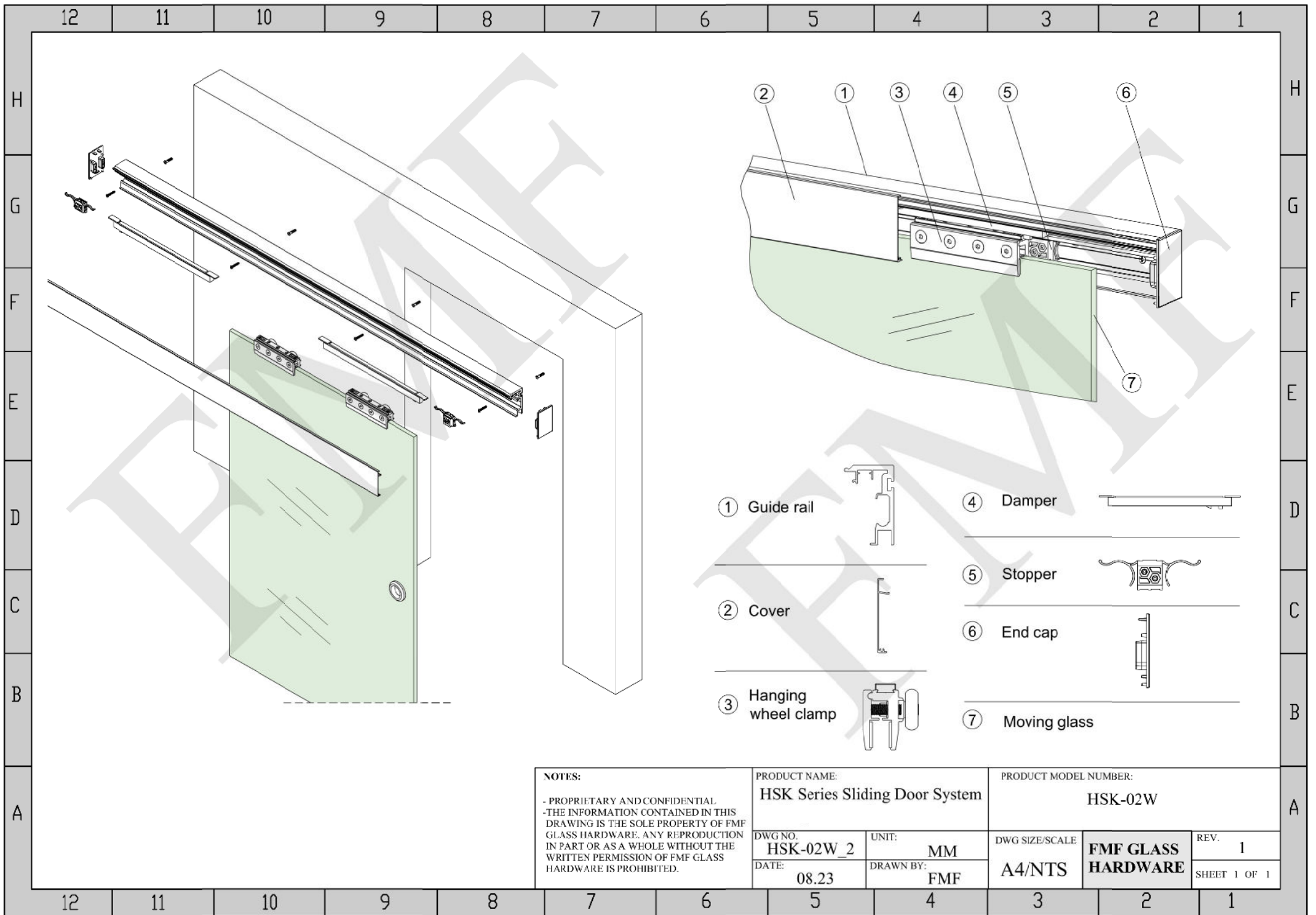
FMF GLASS HARDWARE

REV. 1

DATE: 08.23

DRAWN BY: FMF

SHEET 1 OF 1



NOTES:
 - PROPRIETARY AND CONFIDENTIAL.
 - THE INFORMATION CONTAINED IN THIS DRAWING IS THE SOLE PROPERTY OF FMF GLASS HARDWARE. ANY REPRODUCTION IN PART OR AS A WHOLE WITHOUT THE WRITTEN PERMISSION OF FMF GLASS HARDWARE IS PROHIBITED.

PRODUCT NAME:
HSK Series Sliding Door System

PRODUCT MODEL NUMBER:
HSK-02W

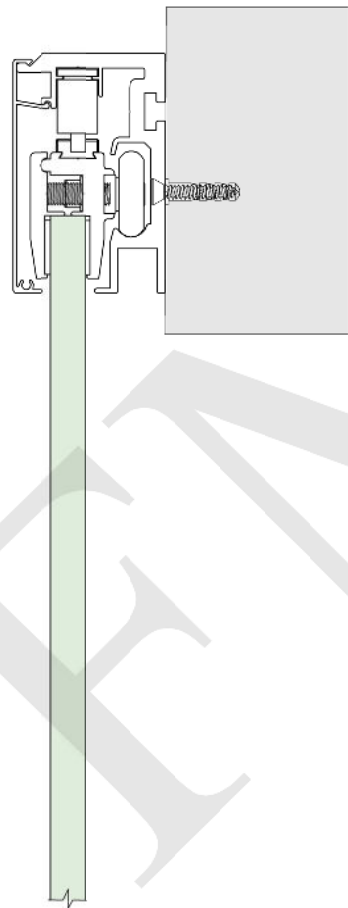
DWG NO.
HSK-02W_2
 DATE:
08.23

UNIT:
MM
 DRAWN BY:
FMF

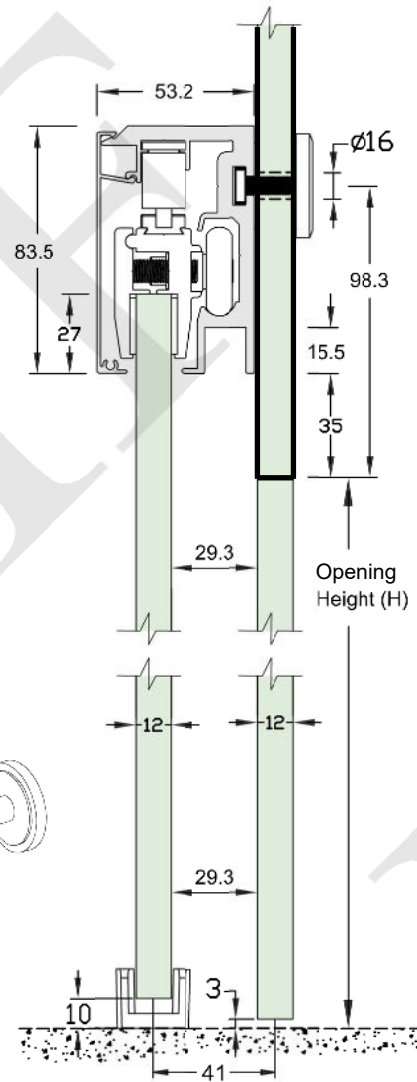
DWG SIZE/SCALE
A4/NTS

**FMF GLASS
 HARDWARE**

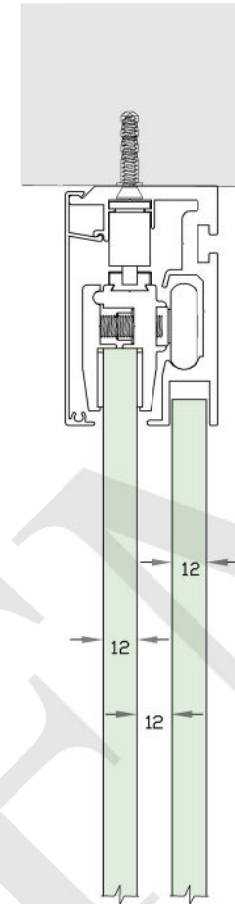
REV. **1**
 SHEET 1 OF 1



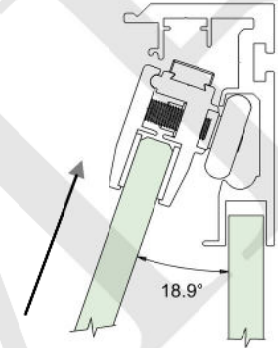
Wall Mount



Glass Mount



Ceiling Mount



INSTALLATION
DETAILS

NOTES:
 - PROPRIETARY AND CONFIDENTIAL
 - THE INFORMATION CONTAINED IN THIS DRAWING IS THE SOLE PROPERTY OF FMF GLASS HARDWARE. ANY REPRODUCTION IN PART OR AS A WHOLE WITHOUT THE WRITTEN PERMISSION OF FMF GLASS HARDWARE IS PROHIBITED.

PRODUCT NAME:
HSK Series Sliding Door System

PRODUCT MODEL NUMBER:
HSK-02W

DWG NO.
HSK-02W_3
 DATE:
08.23

UNIT:
MM
 DRAWN BY:
FMF

DWG SIZE/SCALE
A4/NTS

**FMF GLASS
 HARDWARE**

REV. **1**
 SHEET 1 OF 1