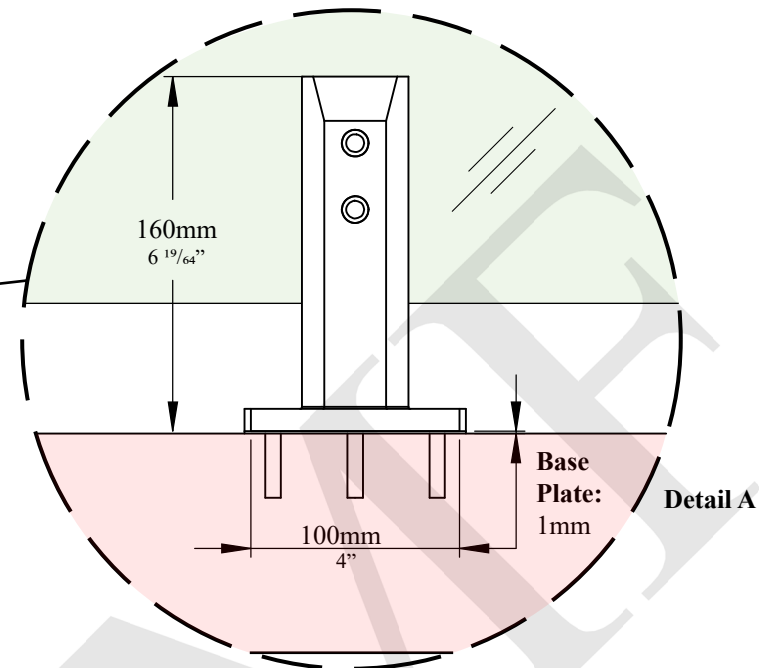


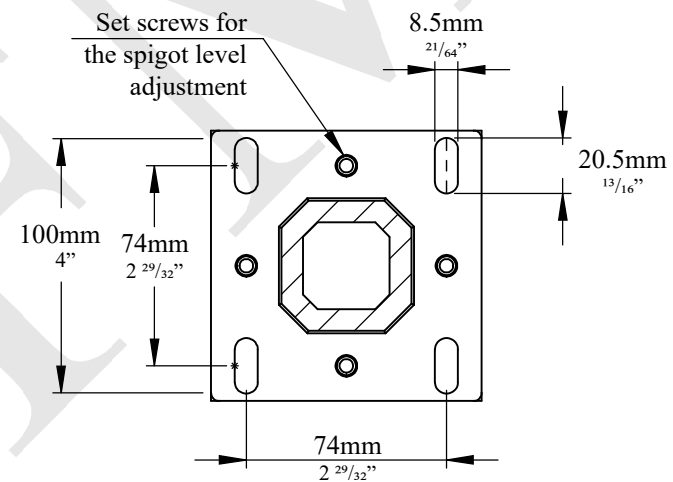
**On Wood Surface:**  
 - Lag bolt 3/8"x 3 1/2"  
 - Optional: 3/8" thru-bolt or threaded rod with flat washers and nuts

**Fasteners Recommended on Concrete Surface:**  
 - Wedge anchor 3/8"x 3 1/2"



| W (Inches) | X (Inches) | Y (Inches) | No. of Spigots |
|------------|------------|------------|----------------|
| 72         | 27         | 9          | 3              |
| 60         | 22         | 8          | 3              |
| 48         | 32         | 8          | 2              |
| 36         | 22         | 7          | 2              |
| 26         | 14         | 6          | 2              |

Glass Panel Height (Max.): 1000mm  
 W (Glass Width): 26" Minimum  
 X= 36" Maximum  
 Y= 6" Minimum - 9" Maximum



**General Notes:**

- The installed glass thickness must be 1/2" or 12mm and must be safety tempered.
- Recommendation is for hardware components only. Mounting the post to the base structure is a site condition and the installers must ensure that the fasteners are strong enough to resist the design weight.
- The base material to which the posts are being mounted must resist the design weight.

**NOTES:**

- PROPRIETARY AND CONFIDENTIAL  
 -THE INFORMATION CONTAINED IN THIS DRAWING IS THE SOLE PROPERTY OF FMF GLASS HARDWARE. ANY REPRODUCTION IN PART OR AS A WHOLE WITHOUT THE WRITTEN PERMISSION OF FMF GLASS HARDWARE IS PROHIBITED.

**PRODUCT NAME:**

6" Square Spigot

**PRODUCT MODEL NUMBER:**

SPI-6SA

**DWG NO.**

SPI-6SA\_1

**UNIT:**

MM

**DATE:**

01.22

**DRAWN BY:**

FMF

**DWG SIZE/SCALE**

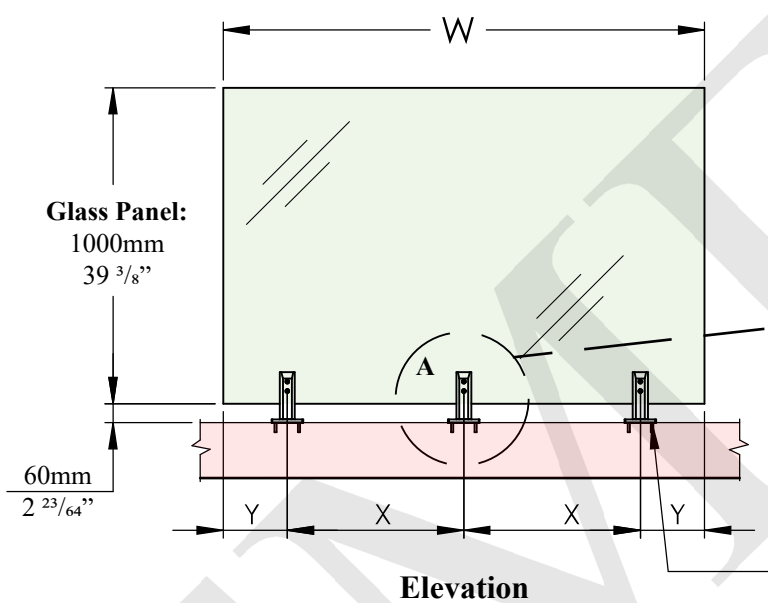
A4/NTS

**FMF GLASS HARDWARE**

**REV.**

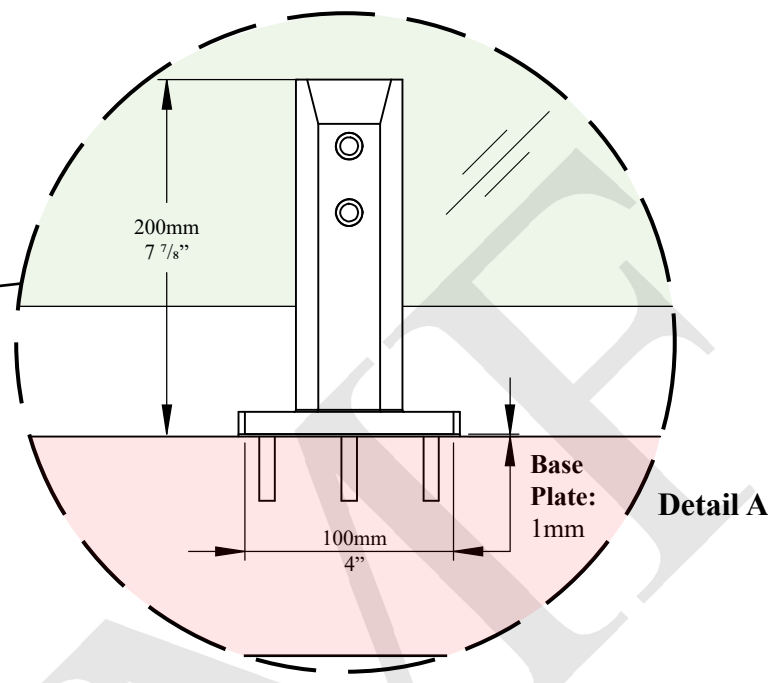
1

SHEET 1 OF 1



**Elevation**

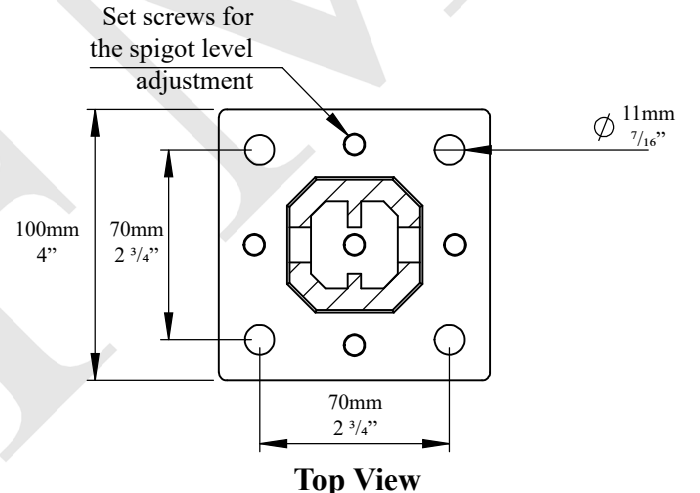
- On Wood Surface:**  
 - Lag bolt 3/8"x 3 1/2"  
 - Optional: 3/8" thru-bolt or threaded rod with flat washers and nuts
- Fasteners Recommended on Concrete Surface:**  
 - Wedge anchor 3/8"x 3 1/2"



**Detail A**

| W (Inches) | X (Inches) | Y (Inches) | No. of Spigots |
|------------|------------|------------|----------------|
| 72         | 27         | 9          | 3              |
| 60         | 22         | 8          | 3              |
| 48         | 32         | 8          | 2              |
| 36         | 22         | 7          | 2              |
| 26         | 14         | 6          | 2              |

Glass Panel Height (Max.): 39 3/8"  
 W (Glass Width): 26" Minimum  
 X= 36" Maximum  
 Y= 6" Minimum - 9" Maximum



**Top View**

**General Notes:**

- The installed glass thickness must be 1/2" or 12mm and must be safety tempered.
- Recommendation is for hardware components only. Mounting the post to the base structure is a site condition and the installers must ensure that the fasteners are strong enough to resist the design weight.
- The base material to which the posts are being mounted must resist the design weight.

|  |                  |  |                           |   |   |
|--|------------------|--|---------------------------|---|---|
| <b>NOTES:</b><br>- PROPRIETARY AND CONFIDENTIAL<br>-THE INFORMATION CONTAINED IN THIS DRAWING IS THE SOLE PROPERTY OF FMF GLASS HARDWARE. ANY REPRODUCTION IN PART OR AS A WHOLE WITHOUT THE WRITTEN PERMISSION OF FMF GLASS HARDWARE IS PROHIBITED. |                  | <b>PRODUCT NAME:</b><br>8" Square Spigot |                           | <b>PRODUCT MODEL NUMBER:</b><br>SPI-8SA |   |
| DWG NO.<br>SPI-8SA_1   | UNIT:<br>MM      | DWG SIZE/SCALE<br>A4/NTS                 | <b>FMF GLASS HARDWARE</b> | REV.                                    | 1 |
| DATE:<br>01.22   | DRAWN BY:<br>FMF |  |                           | SHEET 1 OF 1                            |   |