

GLASS FABRICATION

Model No.	Finish	Length (L)
38ST-S01.SS	Brushed Stainless	0.5"
38ST-S01.BL	Matte Black	0.5"
38ST-S02.SS	Brushed Stainless	1"
38ST-S02.BL	Matte Black	1"
38ST-S03.SS	Brushed Stainless	1.25"
38ST-S03.BL	Matte Black	1.25"
38ST-S04.SS	Brushed Stainless	1.5"
38ST-S04.BL	Matte Black	1.5"
38ST-S05.SS	Brushed Stainless	2"
38ST-S05.BL	Matte Black	2"

NOTES: - PROPRIETARY AND CONFIDENTIAL - THE INFORMATION CONTAINED IN THIS DRAWING IS THE SOLE PROPERTY OF FMF GLASS HARDWARE. ANY REPRODUCTION IN PART OR AS A WHOLE WITHOUT THE WRITTEN PERMISSION OF FMF GLASS HARDWARE IS PROHIBITED.	PRODUCT NAME: Solid Standoff		PRODUCT MODEL NUMBER: 38ST		
	DWG NO. 38ST_1	UNIT: MM	DWG SIZE/SCALE A4/NTS	FMF GLASS HARDWARE	REV. 1
	DATE: 05.22	DRAWN BY: FMF			SHEET 1 OF 1

12 11 10 9 8 7 6 5 4 3 2 1

H

H

G

G

F

F

E

E

D

D

C

C

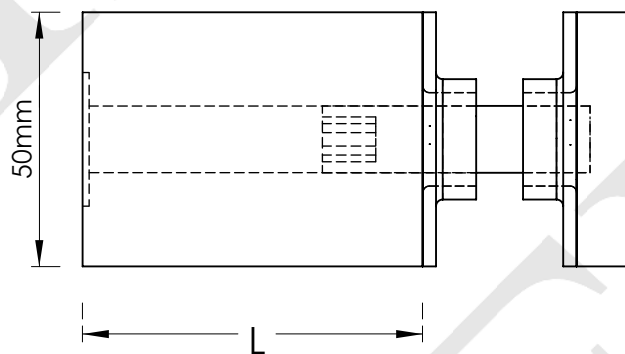
B

B

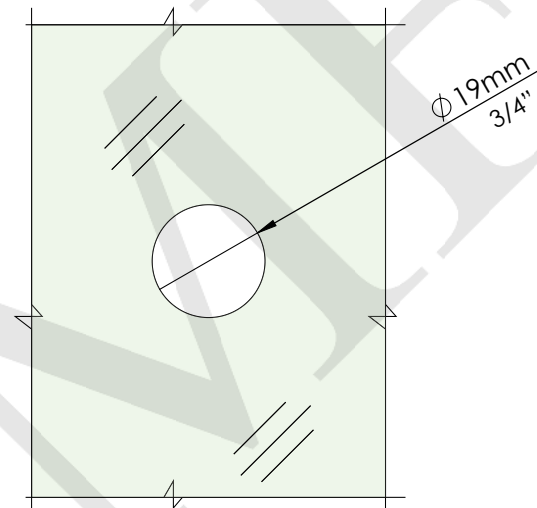
A

A

Model No.	Finish	Length (L)
50ST-S01.SS	Brushed Stainless	0.25"
50ST-S01.BL	Matte Black	0.25"
50ST-S02.SS	Brushed Stainless	0.5"
50ST-S02.BL	Matte Black	0.5"
50ST-S03.SS	Brushed Stainless	1"
50ST-S03.BL	Matte Black	1"
50ST-S04.SS	Brushed Stainless	1.25"
50ST-S04.BL	Matte Black	1.25"
50ST-S05.SS	Brushed Stainless	1.5"
50ST-S05.BL	Matte Black	1.5"
50ST-S06.SS	Brushed Stainless	1.75"
50ST-S06.BL	Matte Black	1.75"
50ST-S07.SS	Brushed Stainless	2.0"
50ST-S07.BL	Matte Black	2.0"
50ST-S08.SS	Brushed Stainless	2.5"
50ST-S08.BL	Matte Black	2.5"
50ST-S09.SS	Brushed Stainless	3"
50ST-S09.BL	Matte Black	3"
50ST-S10.SS	Brushed Stainless	3.5"
50ST-S10.BL	Matte Black	3.5"



ELEVATION



GLASS FABRICATION

NOTES: - PROPRIETARY AND CONFIDENTIAL - THE INFORMATION CONTAINED IN THIS DRAWING IS THE SOLE PROPERTY OF FMF GLASS HARDWARE. ANY REPRODUCTION IN PART OR AS A WHOLE WITHOUT THE WRITTEN PERMISSION OF FMF GLASS HARDWARE IS PROHIBITED.	PRODUCT NAME: Solid Standoff		PRODUCT MODEL NUMBER: 50ST		
	DWG NO. 50ST_1	UNIT: MM	DWG SIZE/SCALE A4/NTS	FMF GLASS HARDWARE	REV. 1
	DATE: 05.22	DRAWN BY: FMF			SHEET 1 OF 1

12 11 10 9 8 7 6 5 4 3 2 1