

12 11 10 9 8 7 6 5 4 3 2 1

H

G

F

E

D

C

B

A

H

G

F

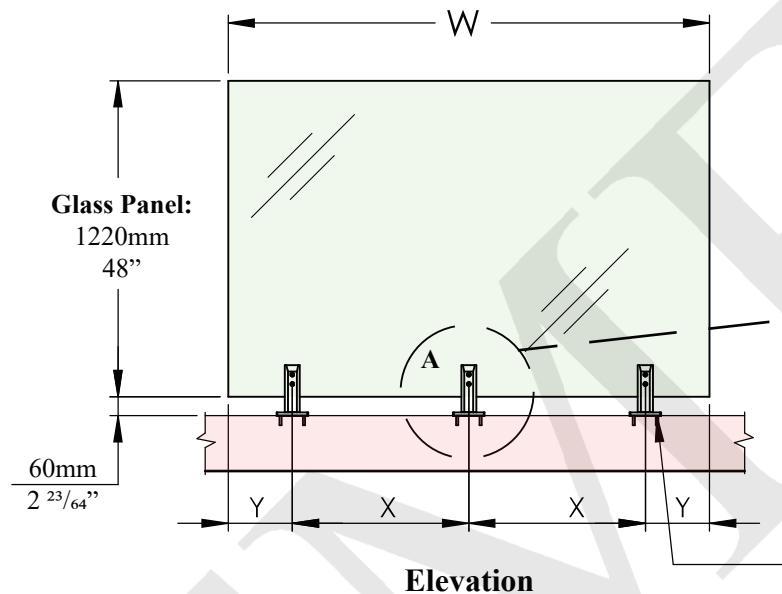
E

D

C

B

A

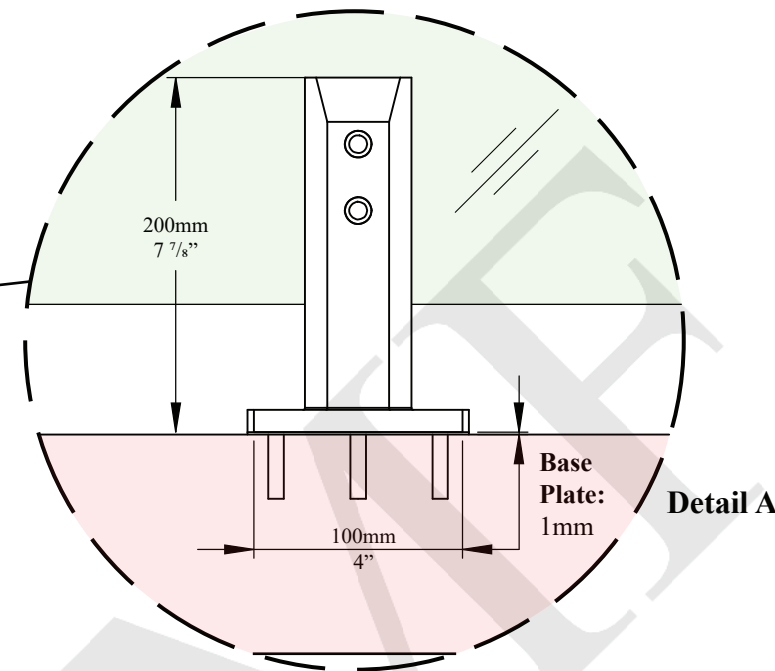


On Wood Surface:

- Lag bolt 3/8"x5"
- Optional: 3/8" thru-bolt or threaded rod with flat washers and nuts

Fasteners Recommended on Concrete Surface:

- Wedge anchor 3/8"x4"



W (Inches)	X (Inches)	Y (Inches)	No. of Spigots
72	27	9	3
60	22	8	3
48	32	8	2
36	22	7	2
26	14	6	2

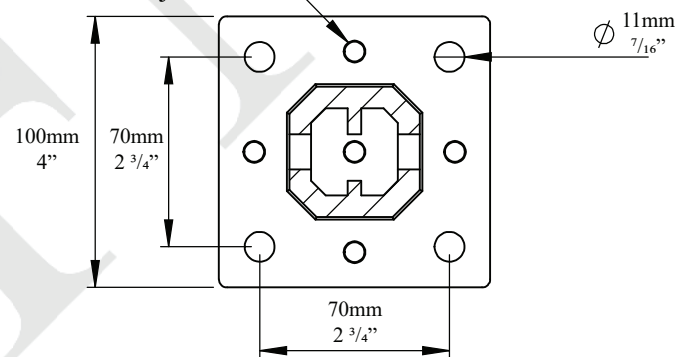
Glass Panel Height (Max.): 48"

W (Glass Width): 26" Minimum

X= 36" Maximum

Y= 6" Minimum - 9" Maximum

Set screws for
the spigot level
adjustment



Top View

General Notes:

- The installed glass thickness must be 1/2" or 12mm and must be safety tempered.
- Recommendation is for hardware components only. Mounting the post to the base structure is a site condition and the installers must ensure that the fasteners are strong enough to resist the design weight.
- The base material to which the posts are being mounted must resist the design weight.

NOTES:

- PROPRIETARY AND CONFIDENTIAL
-THE INFORMATION CONTAINED IN THIS
DRAWING IS THE SOLE PROPERTY OF FMF
GLASS HARDWARE. ANY REPRODUCTION
IN PART OR AS A WHOLE WITHOUT THE
WRITTEN PERMISSION OF FMF GLASS
HARDWARE IS PROHIBITED.

PRODUCT NAME:

8" Square Spigot

PRODUCT MODEL NUMBER:

SPI-8SA

DWG NO.

SPI-8SA_1

UNIT:

MM

DWG SIZE/SCALE

A4/NTS

REV.

1

DATE:

01.22

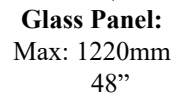
DRAWN BY:

FMF

**FMF GLASS
HARDWARE**

SHEET 1 OF 1

12 11 10 9 8 7 6 5 4 3 2 1

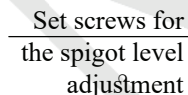


- Lag bolt 3/8"x5"
- Optional: 3/8" thru-bolt or threaded rod with flat washers and nuts

- Wedge anchor 3/8"x4"



Glass Panel Height (Max.): 1220mm
W (Glass Width): 26" Minimum
X= 36" Maximum
Y= 6" Minimum - 9" Maximum



- The installed glass thickness must be 1/2" or 12mm and must be safety tempered.
- Recommendation is for hardware components only. Mounting the post to the base structure is a site condition and the installers must ensure that the fasteners are strong enough to resist the design weight.
- The base material to which the posts are being mounted must resist the design weight.

NOTES: - PROPRIETARY AND CONFIDENTIAL -THE INFORMATION CONTAINED IN THIS DRAWING IS THE SOLE PROPERTY OF FMF GLASS HARDWARE. ANY REPRODUCTION IN PART OR AS A WHOLE WITHOUT THE WRITTEN PERMISSION OF FMF GLASS HARDWARE IS PROHIBITED.	PRODUCT NAME: 6” Square Spigot		PRODUCT MODEL NUMBER: SPI-6SA		
	DWG NO: SPI-6SA_1	UNIT: MM	DWG SIZE/SCALE A4/NTS	FMF GLASS HARDWARE	REV. 1
	DATE: 01.22	DRAWN BY: FMF			SHEET 1 OF 1