

12 11 10 9 8 7 6 5 4 3 2 1

H

G

F

E

D

C

B

A

H

G

F

E

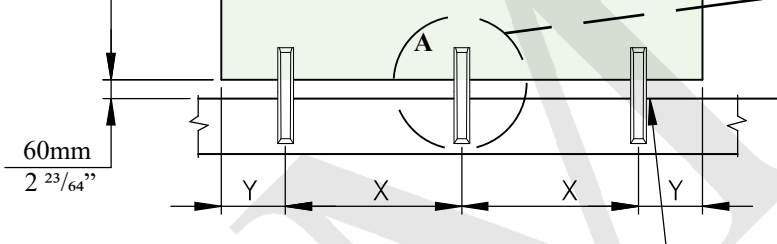
D

C

B

A

Glass Panel:
Max: 1220mm
48"

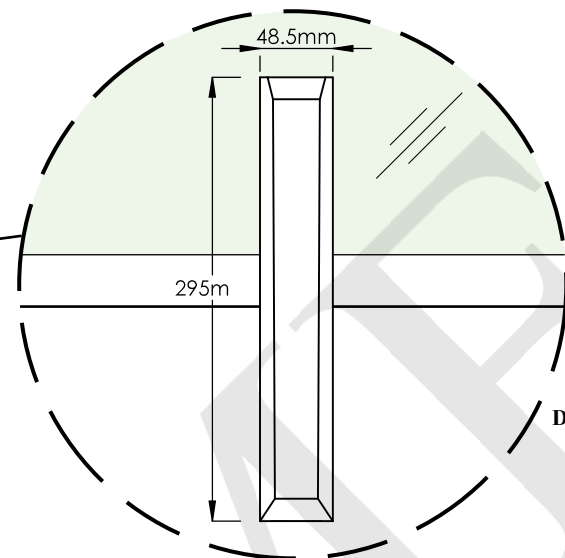


On Wood Surface:

- Lag bolt 3/8"x5"
- Optional: 3/8" thru-bolt or threaded rod with flat washers and nuts

Fasteners Recommended on Concrete Surface:

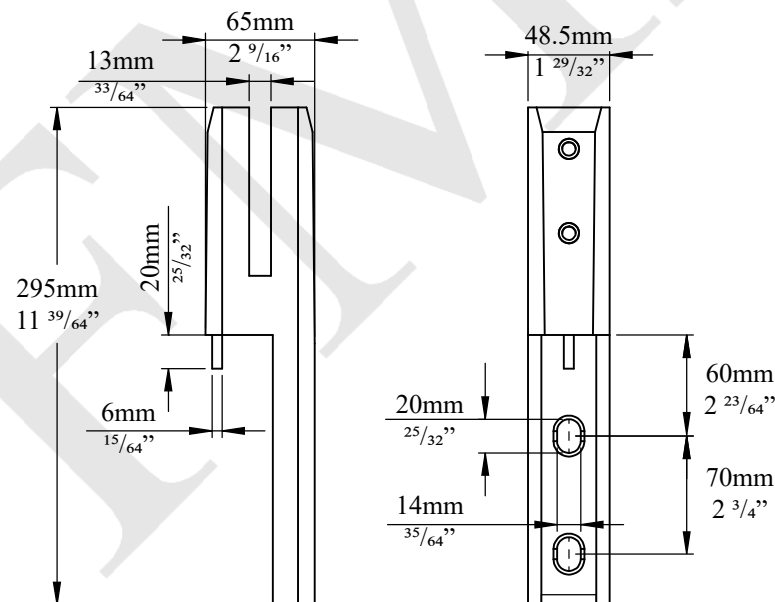
- Wedge anchor 3/8"x4"



Detail A

W (Inches)	X (Inches)	Y (Inches)	No. of Spigots
72	27	9	3
60	22	8	3
48	32	8	2
36	22	7	2
26	14	6	2

Glass Panel Height (Max.): 48"
W (Glass Width): 26" Minimum
X= 36" Maximum
Y= 6" Minimum - 9" Maximum



General Notes:

- The installed glass thickness must be 1/2" or 12mm and must be safety tempered.
- Recommendation is for hardware components only. Mounting the post to the base structure is a site condition and the installers must ensure that the fasteners are strong enough to resist the design weight.
- The base material to which the posts are being mounted must resist the design weight.

NOTES:

- PROPRIETARY AND CONFIDENTIAL
- THE INFORMATION CONTAINED IN THIS DRAWING IS THE SOLE PROPERTY OF FMF GLASS HARDWARE. ANY REPRODUCTION IN PART OR AS A WHOLE WITHOUT THE WRITTEN PERMISSION OF FMF GLASS HARDWARE IS PROHIBITED.

PRODUCT NAME:

Square Edge Mount Spigot

PRODUCT MODEL NUMBER:

SPI-6SE

DWG NO.

SPI-6SE_1

UNIT:

MM

DATE:

01.22

DRAWN BY:

FMF

DWG SIZE/SCALE

A4/NTS

**FMF GLASS
HARDWARE**

REV.

1

SHEET 1 OF 1

12 11 10 9 8 7 6 5 4 3 2 1