

Glass Door Height =
 Wall Opening height + Overlap (1/2" min. - 4" max.)

Height of Holes =
 Glass Door Height + 1 7/16" (37mm)

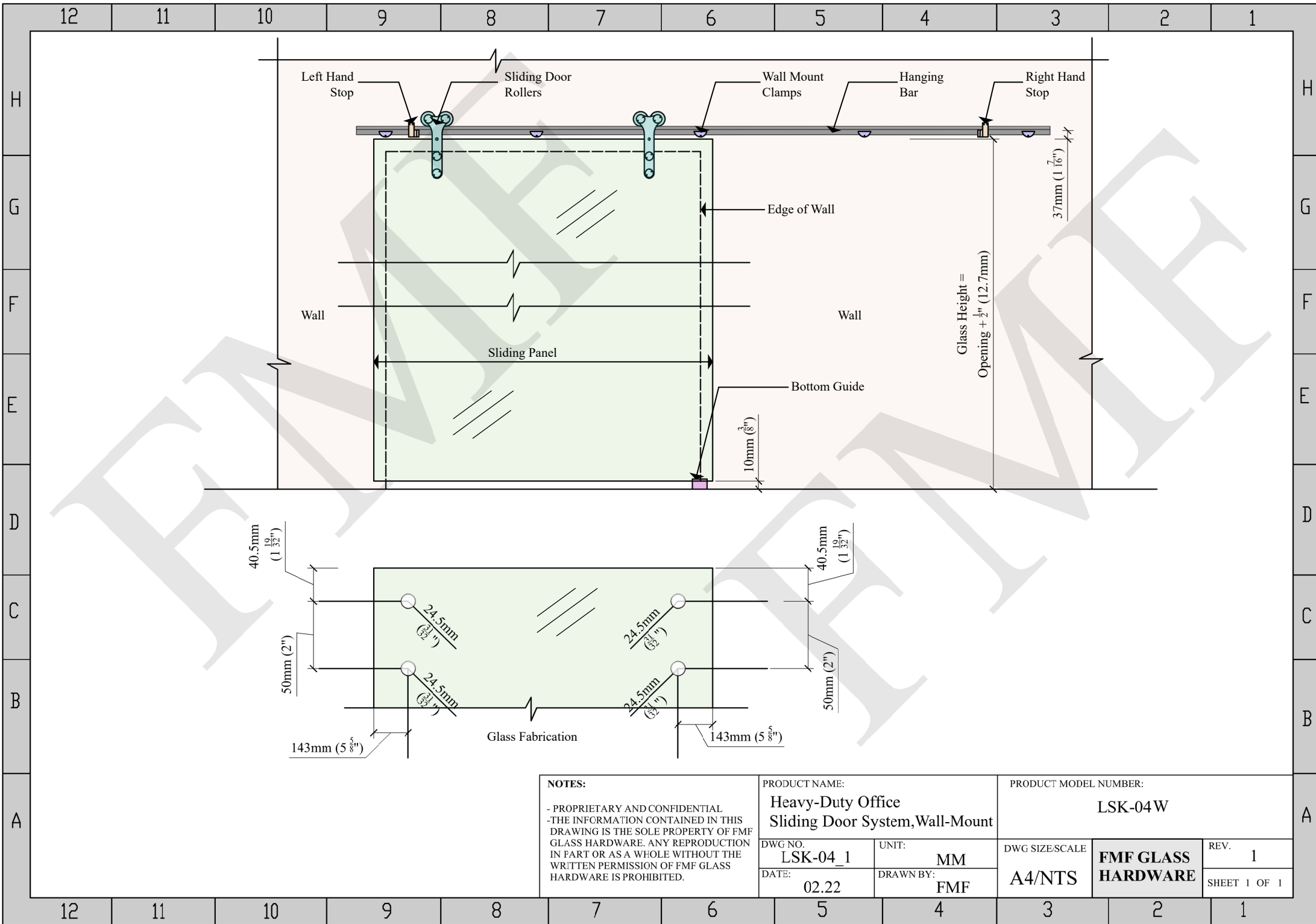
NOTES:
 - PROPRIETARY AND CONFIDENTIAL
 - THE INFORMATION CONTAINED IN THIS DRAWING IS THE SOLE PROPERTY OF FMF GLASS HARDWARE. ANY REPRODUCTION IN PART OR AS A WHOLE WITHOUT THE WRITTEN PERMISSION OF FMF GLASS HARDWARE IS PROHIBITED.

PRODUCT NAME:
Heavy-Duty Office Sliding Door System Glass Mount

DWG NO. **LSK-04G_1** UNIT: **MM**
 DATE: **04.22** DRAWN BY: **FMF**

PRODUCT MODEL NUMBER:
LSK-04G

DWG SIZE/SCALE **FMF GLASS HARDWARE** REV. **1**
A4/NTS SHEET 1 OF 1



NOTES:
 - PROPRIETARY AND CONFIDENTIAL
 - THE INFORMATION CONTAINED IN THIS DRAWING IS THE SOLE PROPERTY OF FMF GLASS HARDWARE. ANY REPRODUCTION IN PART OR AS A WHOLE WITHOUT THE WRITTEN PERMISSION OF FMF GLASS HARDWARE IS PROHIBITED.

PRODUCT NAME:
Heavy-Duty Office Sliding Door System, Wall-Mount

PRODUCT MODEL NUMBER:
LSK-04W

DWG NO.
LSK-04_1
 DATE:
02.22

UNIT:
MM
 DRAWN BY:
FMF

DWG SIZE/SCALE
A4/NTS

FMF GLASS HARDWARE

REV. **1**
 SHEET 1 OF 1