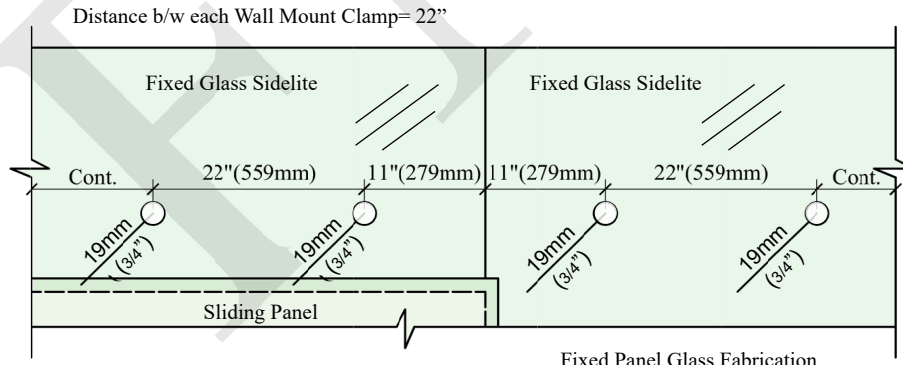


Sliding Panel Glass Fabrication



Fixed Panel Glass Fabrication

Glass Door Height =
Wall Opening height + Overlap (1/2" min. - 4" max.)

Height of Holes =
Glass Door Height + 1 7/16" (37mm)

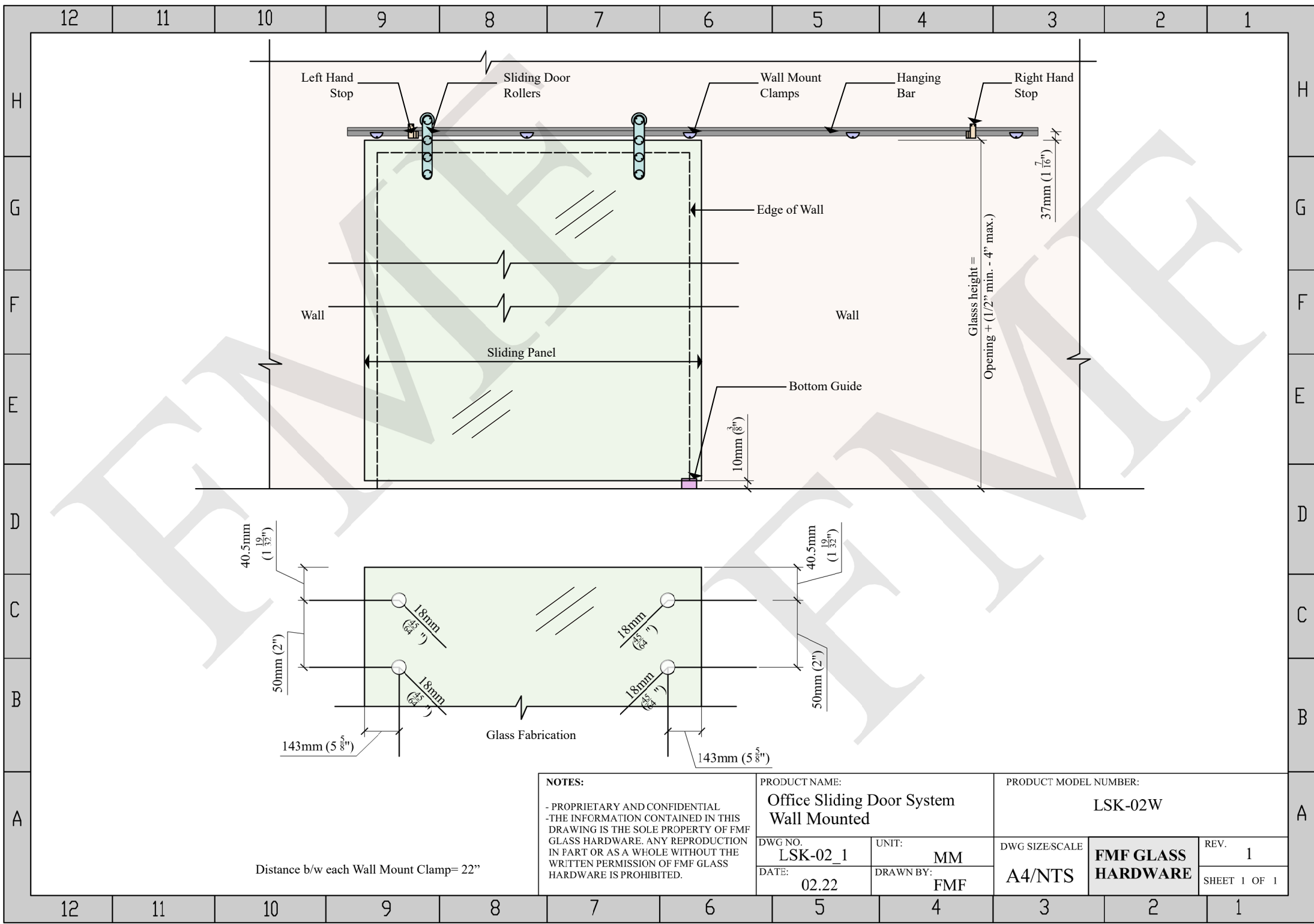
NOTES:
- PROPRIETARY AND CONFIDENTIAL
- THE INFORMATION CONTAINED IN THIS DRAWING IS THE SOLE PROPERTY OF FMF GLASS HARDWARE. ANY REPRODUCTION IN PART OR AS A WHOLE WITHOUT THE WRITTEN PERMISSION OF FMF GLASS HARDWARE IS PROHIBITED.

PRODUCT NAME:
**Office Sliding Door System
Glass Mounted**

PRODUCT MODEL NUMBER:
LSK-02G

DWG NO. **LSK-02G_1** UNIT: **MM**
DATE: **04.22** DRAWN BY: **FMF**

DWG SIZE/SCALE **A4/NTS** **FMF GLASS
HARDWARE** REV. **1**
SHEET 1 OF 1



NOTES:
 - PROPRIETARY AND CONFIDENTIAL
 - THE INFORMATION CONTAINED IN THIS DRAWING IS THE SOLE PROPERTY OF FMF GLASS HARDWARE. ANY REPRODUCTION IN PART OR AS A WHOLE WITHOUT THE WRITTEN PERMISSION OF FMF GLASS HARDWARE IS PROHIBITED.

PRODUCT NAME:
**Office Sliding Door System
 Wall Mounted**

DWG NO. **LSK-02_1** UNIT: **MM**
 DATE: **02.22** DRAWN BY: **FMF**

PRODUCT MODEL NUMBER:
LSK-02W

DWG SIZE/SCALE: **A4/NTS** **FMF GLASS
 HARDWARE** REV. **1**
 SHEET 1 OF 1

Distance b/w each Wall Mount Clamp = 22"