

**Glass Door Height =**  
 Wall Opening height + Overlap (1/2" min. - 4" max.)

**Height of Holes =**  
 Glass Door Height + 1 7/16" (37mm)

**NOTES:**

- PROPRIETARY AND CONFIDENTIAL
- THE INFORMATION CONTAINED IN THIS DRAWING IS THE SOLE PROPERTY OF FMF GLASS HARDWARE. ANY REPRODUCTION IN PART OR AS A WHOLE WITHOUT THE WRITTEN PERMISSION OF FMF GLASS HARDWARE IS PROHIBITED.

PRODUCT NAME:  
**Office Sliding Door System  
 Glass Mounted**

DWG NO.  
**LSK-02G\_1**

DATE:  
**04.22**

UNIT:  
**MM**

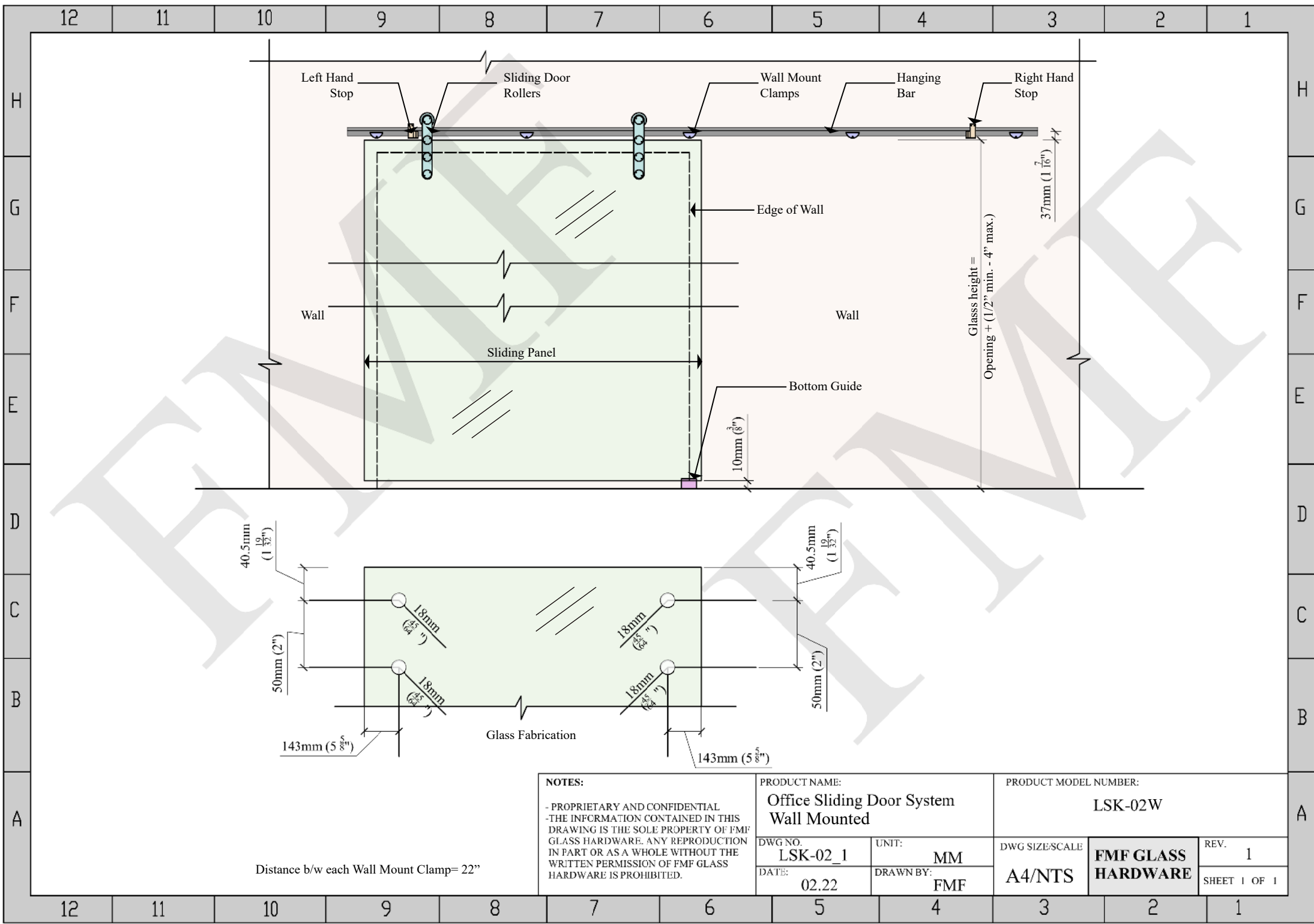
DRAWN BY:  
**FMF**

PRODUCT MODEL NUMBER:  
**LSK-02G**

DWG SIZE/SCALE  
**A4/NTS**

**FMF GLASS  
 HARDWARE**

REV. **1**  
 SHEET 1 OF 1



**NOTES:**  
 - PROPRIETARY AND CONFIDENTIAL  
 - THE INFORMATION CONTAINED IN THIS DRAWING IS THE SOLE PROPERTY OF FMF GLASS HARDWARE. ANY REPRODUCTION IN PART OR AS A WHOLE WITHOUT THE WRITTEN PERMISSION OF FMF GLASS HARDWARE IS PROHIBITED.

PRODUCT NAME:  
**Office Sliding Door System  
 Wall Mounted**

DWG NO. **LSK-02\_1**      UNIT: **MM**  
 DATE: **02.22**      DRAWN BY: **FMF**

PRODUCT MODEL NUMBER:  
**LSK-02W**

DWG SIZE/SCALE: **A4/NTS**      **FMF GLASS  
 HARDWARE**      REV. **1**  
 SHEET **1** OF **1**

Distance b/w each Wall Mount Clamp= 22"