

12 11 10 9 8 7 6 5 4 3 2 1

H

H

G

G

F

F

E

E

D

D

C

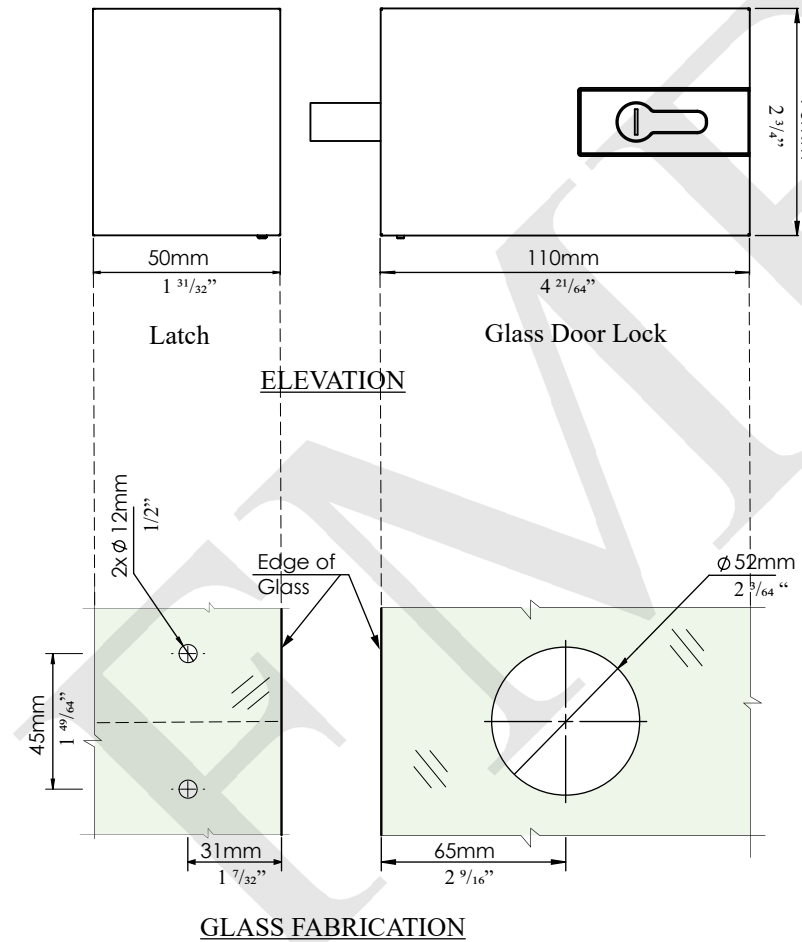
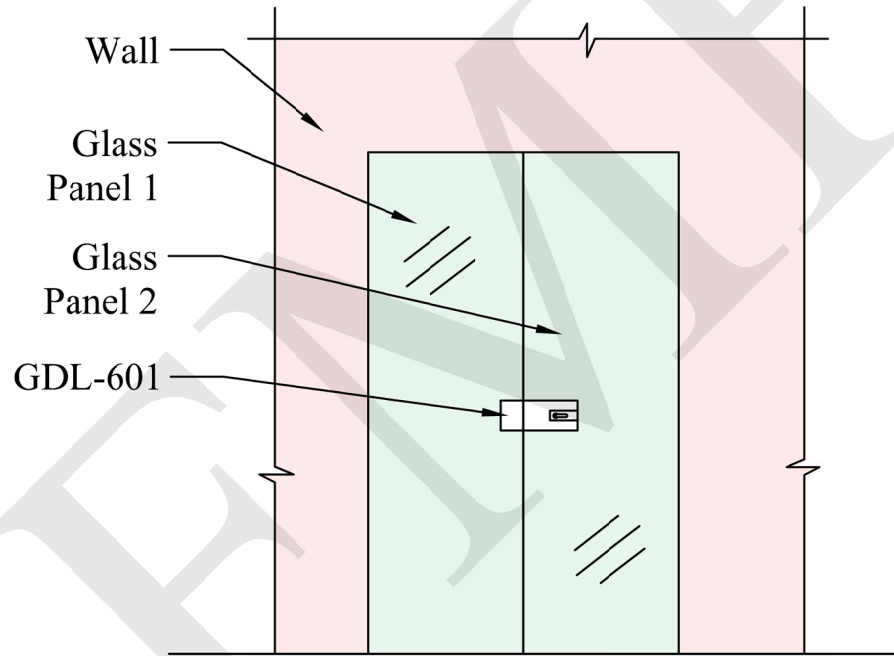
C

B

B

A

A



**NOTES:**

- PROPRIETARY AND CONFIDENTIAL
- THE INFORMATION CONTAINED IN THIS DRAWING IS THE SOLE PROPERTY OF FMF GLASS HARDWARE. ANY REPRODUCTION IN PART OR AS A WHOLE WITHOUT THE WRITTEN PERMISSION OF FMF GLASS HARDWARE IS PROHIBITED.

PRODUCT NAME:  
**600 Series  
Glass-Glass Door Lock**

DWG NO.  
**GDL-601\_1**

DATE:  
**02.22**

UNIT:  
**MM**

DRAWN BY:  
**FMF**

PRODUCT MODEL NUMBER:  
**GDL-601**

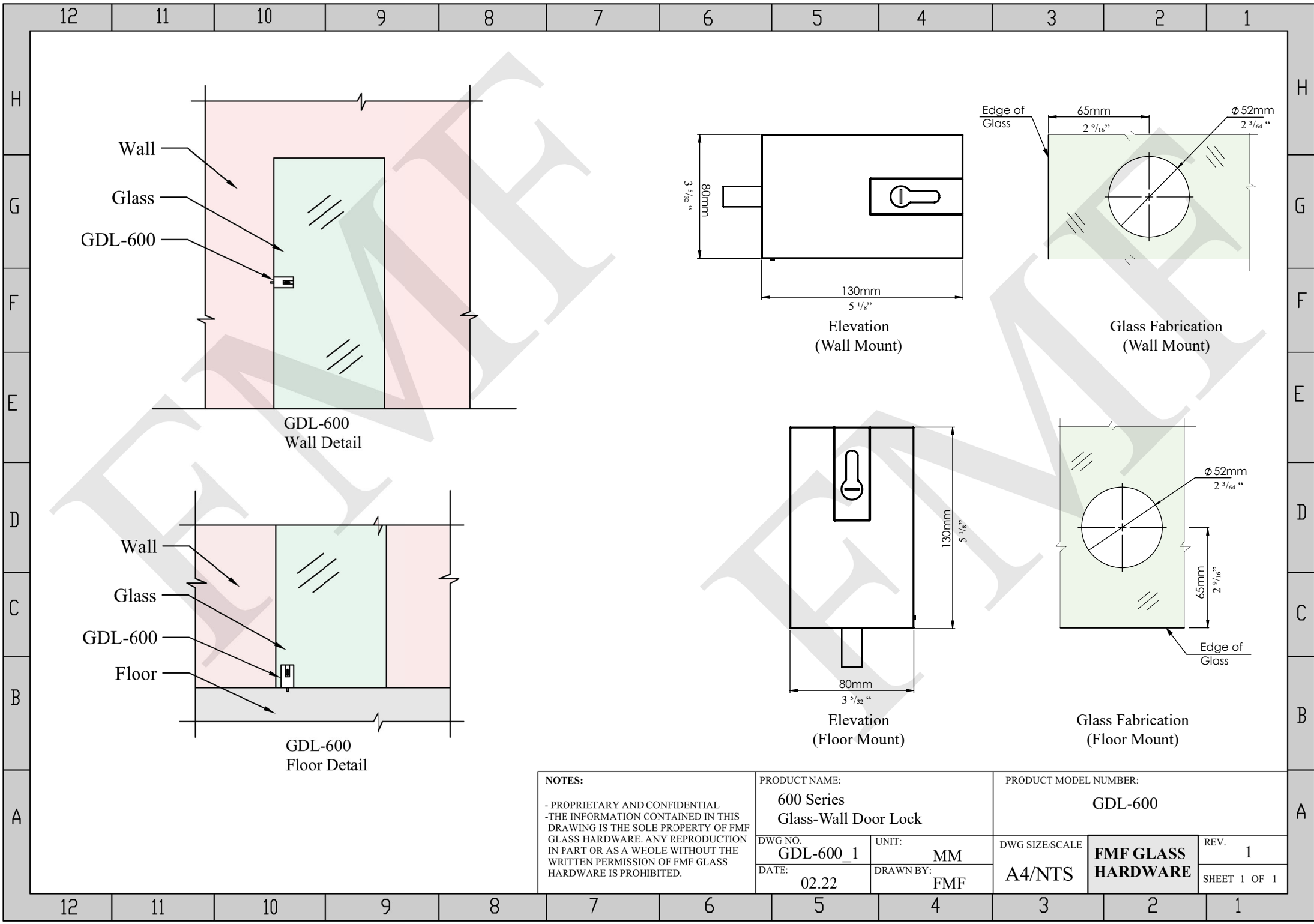
DWG SIZE/SCALE  
**A4/NTS**

**FMF GLASS  
HARDWARE**

REV. **1**

SHEET 1 OF 1

12 11 10 9 8 7 6 5 4 3 2 1



GDL-600  
Wall Detail

Elevation  
(Wall Mount)

Glass Fabrication  
(Wall Mount)

GDL-600  
Floor Detail

Elevation  
(Floor Mount)

Glass Fabrication  
(Floor Mount)

<b>NOTES:</b> - PROPRIETARY AND CONFIDENTIAL - THE INFORMATION CONTAINED IN THIS DRAWING IS THE SOLE PROPERTY OF FMF GLASS HARDWARE. ANY REPRODUCTION IN PART OR AS A WHOLE WITHOUT THE WRITTEN PERMISSION OF FMF GLASS HARDWARE IS PROHIBITED.	PRODUCT NAME: <b>600 Series Glass-Wall Door Lock</b>		PRODUCT MODEL NUMBER: <b>GDL-600</b>		
	DWG NO. <b>GDL-600_1</b>	UNIT: <b>MM</b>	DWG SIZE/SCALE <b>A4/NTS</b>	<b>FMF GLASS HARDWARE</b>	REV. <b>1</b>
	DATE: <b>02.22</b>	DRAWN BY: <b>FMF</b>			SHEET 1 OF 1