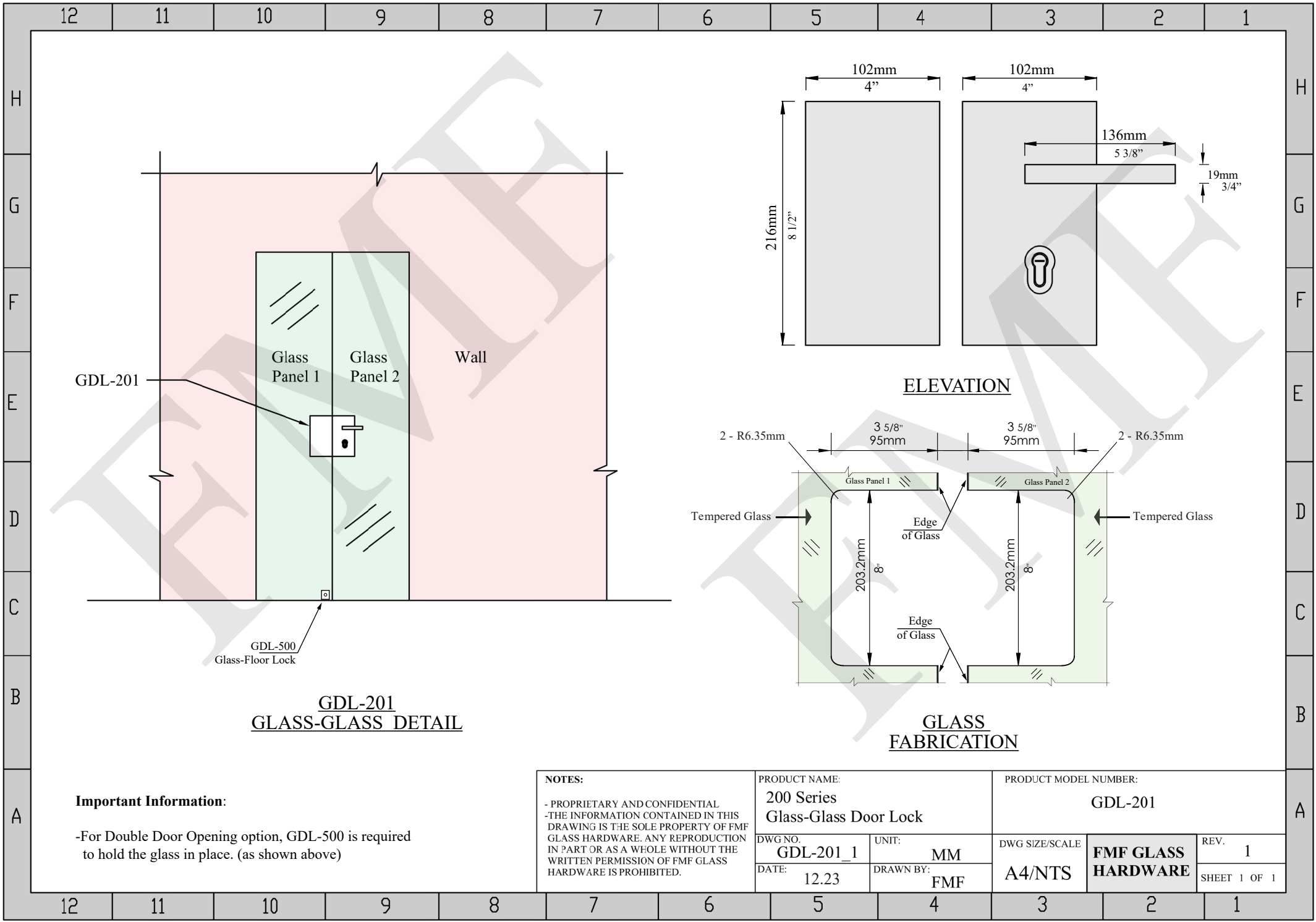


NOTES: - PROPRIETARY AND CONFIDENTIAL -THE INFORMATION CONTAINED IN THIS DRAWING IS THE SOLE PROPERTY OF FMF GLASS HARDWARE. ANY REPRODUCTION IN PART OR AS A WHOLE WITHOUT THE WRITTEN PERMISSION OF FMF GLASS HARDWARE IS PROHIBITED.	PRODUCT NAME: 200 Series Glass-Wall Door Lock		PRODUCT MODEL NUMBER: GDL-200		
	DWG NO. GDL-200_1	UNIT: MM	DWG SIZE/SCALE A4/NTS	FMF GLASS HARDWARE	REV. 1
	DATE: 12.23	DRAWN BY: FMF			SHEET 1 OF 1



GDL-201
GLASS-GLASS DETAIL

ELEVATION

GLASS
FABRICATION

Important Information:

-For Double Door Opening option, GDL-500 is required to hold the glass in place. (as shown above)

NOTES: - PROPRIETARY AND CONFIDENTIAL -THE INFORMATION CONTAINED IN THIS DRAWING IS THE SOLE PROPERTY OF FMF GLASS HARDWARE. ANY REPRODUCTION IN PART OR AS A WHOLE WITHOUT THE WRITTEN PERMISSION OF FMF GLASS HARDWARE IS PROHIBITED.	PRODUCT NAME: 200 Series Glass-Glass Door Lock		PRODUCT MODEL NUMBER: GDL-201		
	DWG NO. GDL-201_1	UNIT: MM	DWG SIZE/SCALE A4/NTS	FMF GLASS HARDWARE	REV. 1
	DATE: 12.23	DRAWN BY: FMF			SHEET 1 OF 1