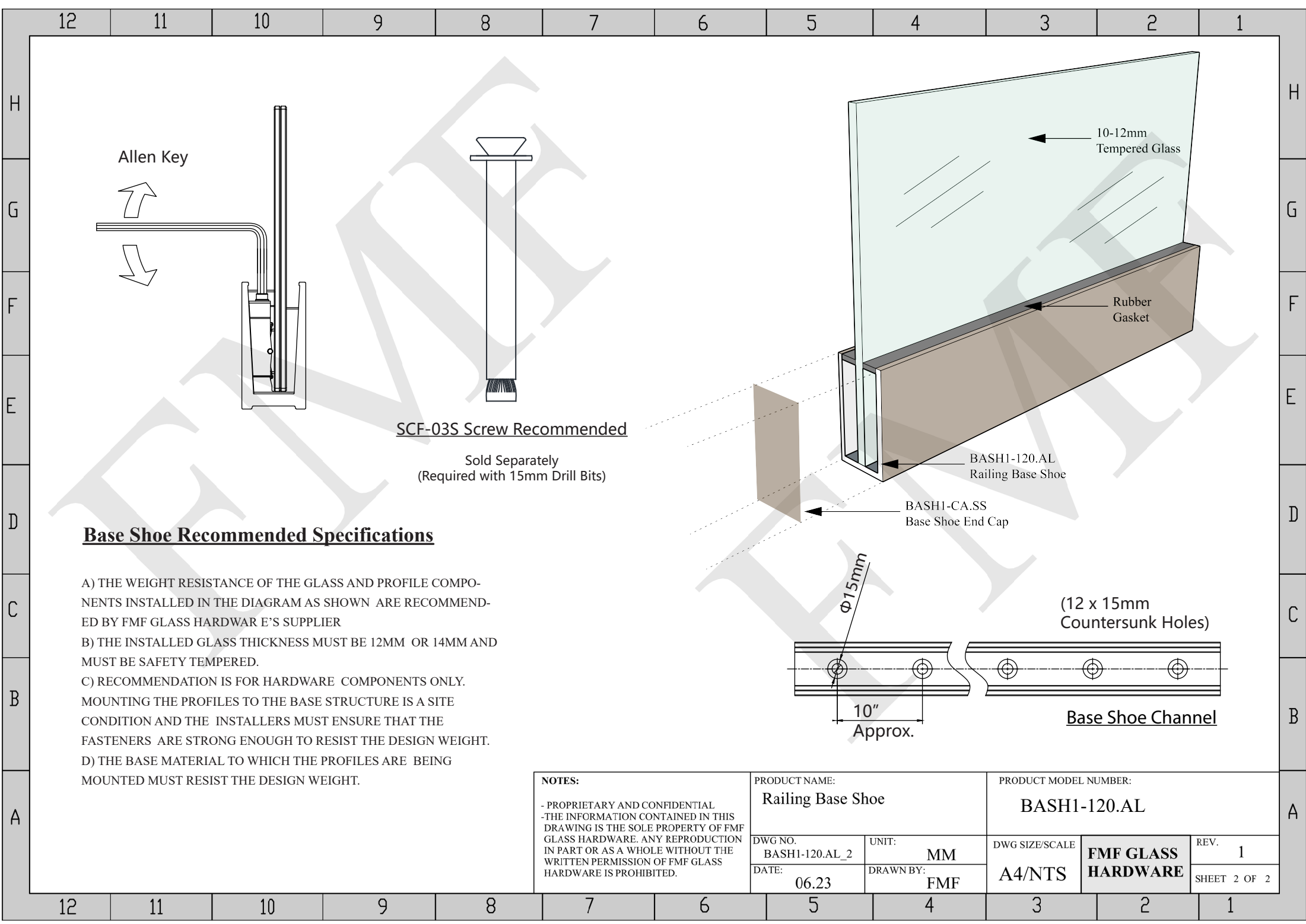


Fasteners Recommended

On Concrete Surface:
Anchor Bolt Screw (SCF-03S)

NOTES: - PROPRIETARY AND CONFIDENTIAL - THE INFORMATION CONTAINED IN THIS DRAWING IS THE SOLE PROPERTY OF FMF GLASS HARDWARE. ANY REPRODUCTION IN PART OR AS A WHOLE WITHOUT THE WRITTEN PERMISSION OF FMF GLASS HARDWARE IS PROHIBITED.		PRODUCT NAME: Railing Base Shoe		PRODUCT MODEL NUMBER: BASH1-120.AL		
		DWG NO. BASH1-120.AL_1	UNIT: MM	DWG SIZE/SCALE A4/NTS	FMF GLASS HARDWARE	REV. 1
		DATE: 06.23	DRAWN BY: FMF			SHEET 1 OF 2



Allen Key

10-12mm
Tempered Glass

Rubber
Gasket

SCF-03S Screw Recommended

Sold Separately
(Required with 15mm Drill Bits)

BASH1-120.AL
Railing Base Shoe

BASH1-CA.SS
Base Shoe End Cap

φ15mm

(12 x 15mm
Countersunk Holes)

10"

Approx.

Base Shoe Channel

Base Shoe Recommended Specifications

- A) THE WEIGHT RESISTANCE OF THE GLASS AND PROFILE COMPONENTS INSTALLED IN THE DIAGRAM AS SHOWN ARE RECOMMENDED BY FMF GLASS HARDWARE'S SUPPLIER
- B) THE INSTALLED GLASS THICKNESS MUST BE 12MM OR 14MM AND MUST BE SAFETY TEMPERED.
- C) RECOMMENDATION IS FOR HARDWARE COMPONENTS ONLY. MOUNTING THE PROFILES TO THE BASE STRUCTURE IS A SITE CONDITION AND THE INSTALLERS MUST ENSURE THAT THE FASTENERS ARE STRONG ENOUGH TO RESIST THE DESIGN WEIGHT.
- D) THE BASE MATERIAL TO WHICH THE PROFILES ARE BEING MOUNTED MUST RESIST THE DESIGN WEIGHT.

NOTES:

- PROPRIETARY AND CONFIDENTIAL
- THE INFORMATION CONTAINED IN THIS
DRAWING IS THE SOLE PROPERTY OF FMF
GLASS HARDWARE. ANY REPRODUCTION
IN PART OR AS A WHOLE WITHOUT THE
WRITTEN PERMISSION OF FMF GLASS
HARDWARE IS PROHIBITED.

PRODUCT NAME:

Railing Base Shoe

PRODUCT MODEL NUMBER:

BASH1-120.AL

DWG NO.

BASH1-120.AL_2

UNIT:

MM

DWG SIZE/SCALE

A4/NTS

DRAWN BY:
FMF

**FMF GLASS
HARDWARE**

REV.

1

SHEET 2 OF 2

12

11

10

9

8

7

6

5

4

3

2

1

H

G

F

E

D

C

B

A

H

G

F

E

D

C

B

A

12

11

10

9

8

7

6

5

4

3

2

1